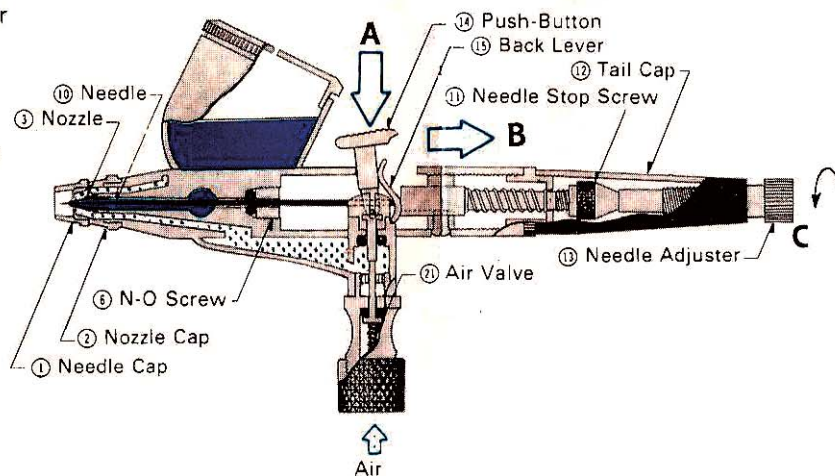


MODEL AB722 ~ AB732 INSTRUCTIONS

HOW TO OPERATE

- Press Push-Button slightly or hard then a small or large amount of air emerges out of nozzle accordingly.
- After pressing push-button, draw it backward gradually for color atomization. Air brush gives fine-line spray to boarder area in accordance with the degree of pressing and drawing push button as well as the distance between air brush and a work surface.
- By adjusting the needle adjustor, can set the width of the spray as desired. For broader pattern, turn it in counter clockwise direction.
- Stippling is achieved by removing the needle cap and nozzle cap and adjusting the air pressure.

AIRBRUSH MECHANISM



THE MOST COMMON PROBLEMS

- Bubbles appear in cup.
- Spray is abnormally wide or double pattern.
- Color spreads like blots.

Causes and solutions

A. problem:

- Nozzle is blocked, or split, or transformed.
- Needle is not fitted to nozzle cap and needle cap.
- Check nozzle by a magnifier and replace it as something is unusual.

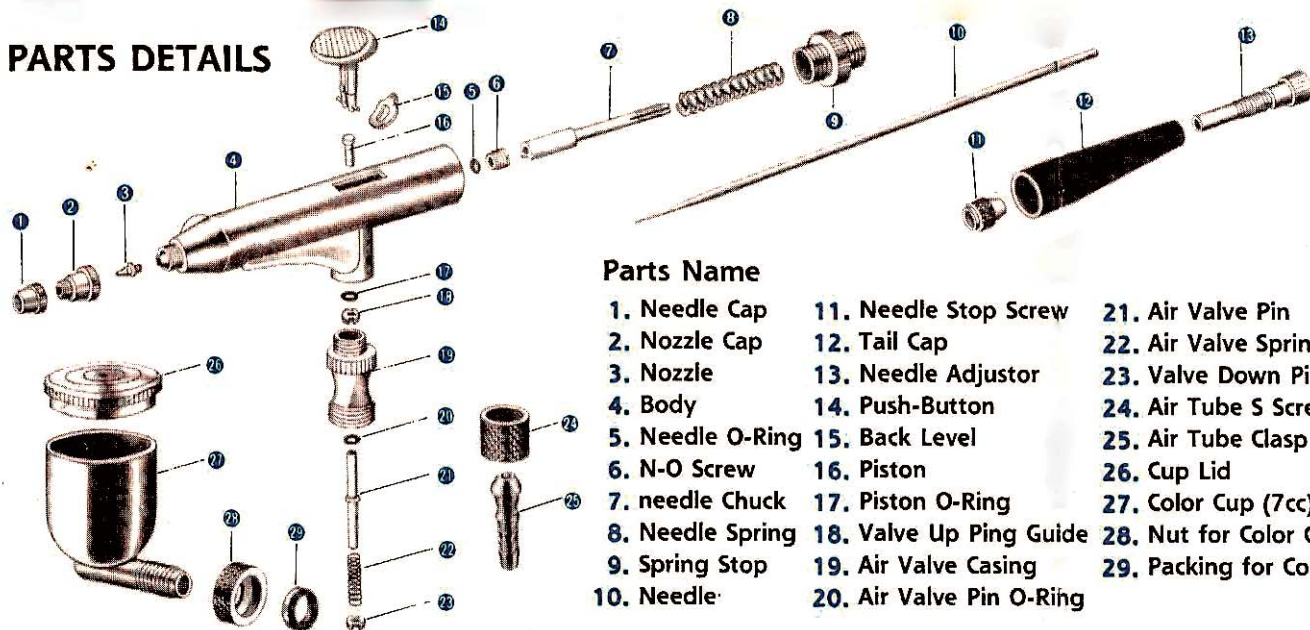
B. problem:

- Solid pigment jammed in nozzle or stuck to needle tip, or needle tip bent.
- Replace needle as bent, and also replace nozzle because of oftendamaged by bent needle.

C. problem:

- Nozzle tip too close to work surface, or push-button drawn too much
- Keep Nozzle tip away, or press fully push-button draw it slightly.

PARTS DETAILS



Parts Name

- | | | |
|------------------|--------------------------|---------------------------|
| 1. Needle Cap | 11. Needle Stop Screw | 21. Air Valve Pin |
| 2. Nozzle Cap | 12. Tail Cap | 22. Air Valve Spring |
| 3. Nozzle | 13. Needle Adjustor | 23. Valve Down Pin Guide |
| 4. Body | 14. Push-Button | 24. Air Tube S Screw |
| 5. Needle O-Ring | 15. Back Level | 25. Air Tube Clasp |
| 6. N-O Screw | 16. Piston | 26. Cup Lid |
| 7. needle Chuck | 17. Piston O-Ring | 27. Color Cup (7cc) |
| 8. Needle Spring | 18. Valve Up Ping Guide | 28. Nut for Color Cup |
| 9. Spring Stop | 19. Air Valve Casing | 29. Packing for Color Cup |
| 10. Needle | 20. Air Valve Pin O-Ring | |

CAUTIONS

- The greatest care is requested to operate airbrush because it is a very precision instrument, especially the three points of Nozzle, Nozzle Cap and needle tip which are the most delicate and precision parts.
- A special attention should be drawn not to let the finger suddenly out of push-button when drawing it hard as nozzle may often be transformed or damaged by this kind of shock
- Clean air brush right after using.

PROFESSIONAL AIRBRUSH DOUBLE ACTION