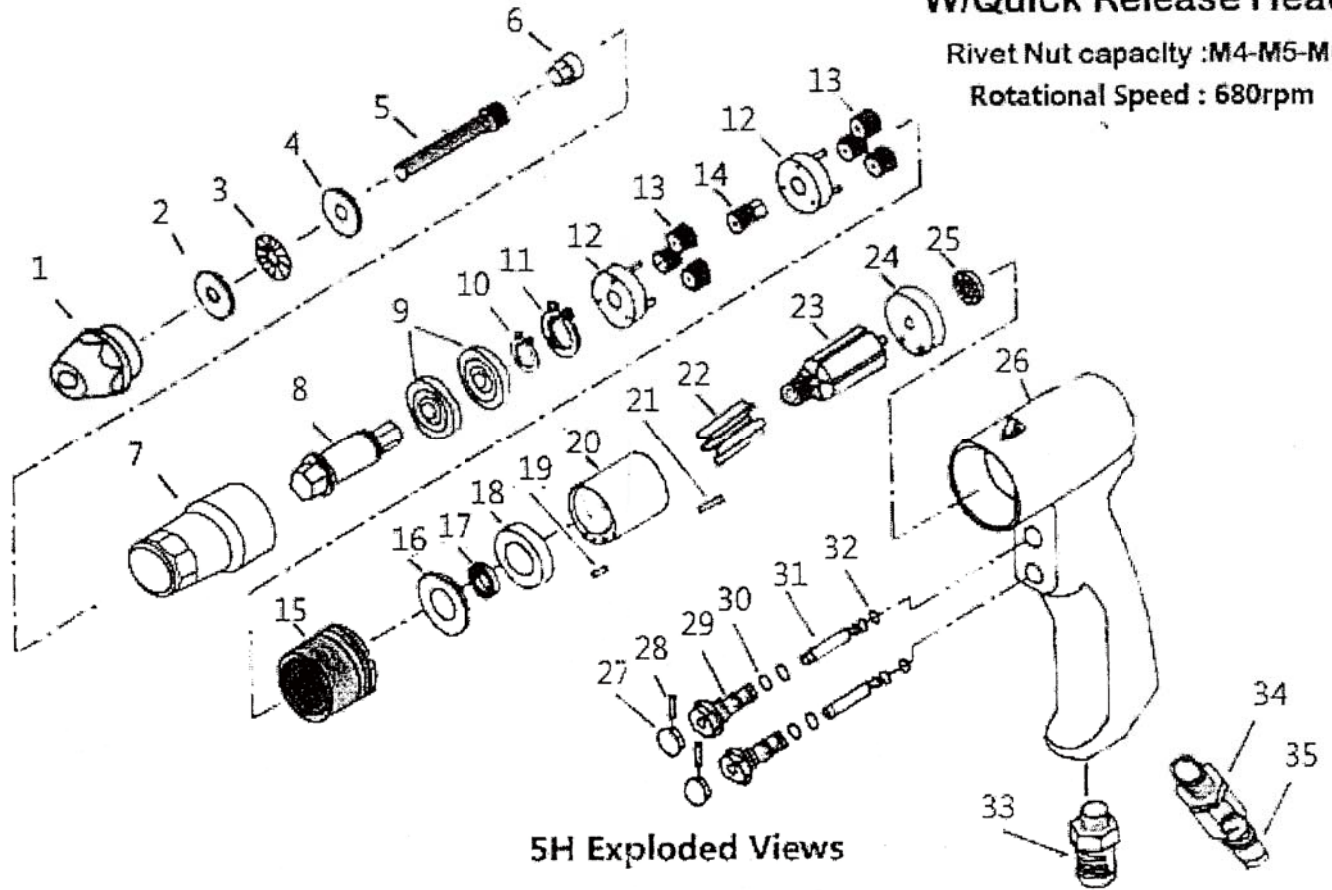


Air Rivet Nut Tool W/Quick Release Head

Rivet Nut capacity : M4-M5-M6
Rotational Speed : 680rpm



5H Exploded Views

| No. | Description | 品名 | QTY |
|-----|--------------------------|------------|-----|
| 1 | Nose Piece | 拉帽頭 | 1 |
| 2 | Washer | 墊片 | 1 |
| 3 | Ball Bearing | 培林 | 1 |
| 4 | Washer | 墊片 | 1 |
| 5 | Screw | 螺絲 | 1 |
| 6 | Bolt Driver Hexagon | 六角接桿 | 1 |
| 7 | Nose Housing | 前端外殼 | 1 |
| 8 | Bolt Driver For Bearing | 培林座接桿 | 1 |
| 9 | Bearing (6200) | 培林 (6200) | 2 |
| 10 | C-Shape Ring | C 型扣環 | 1 |
| 11 | C-Shape Ring | C 型扣環 | 1 |
| 12 | Gear Cage (1/2) | 齒輪座 (1/2) | 2 |
| 13 | Planet Gear (15T) | 齒輪 (15T) | 6 |
| 14 | Transmission Planet Gear | 傳動齒輪 (12T) | 1 |
| 15 | Internal Gear | 內齒環座 | 1 |
| 16 | Washer | 墊片 | 1 |
| 17 | Bearing (6000) | 培林 (6000) | 1 |
| 18 | End Plate | 上蓋 | 1 |
| 19 | Pin | 上蓋固定銷 | 1 |

| No. | Description | 品名 | QTY |
|-----|------------------|----------|-----|
| 20 | Cylinder | 汽缸 | 1 |
| 21 | pin | 下蓋固定銷 | 1 |
| 22 | Rotary blade | 葉片 | 6 |
| 23 | Rotary (12T) | 轉子 (12T) | 1 |
| 24 | End Plate | 下蓋 | 1 |
| 25 | Bearing (626) | 培林 (626) | 1 |
| 26 | 5HP Motor Case | 5HP 本體 | 1 |
| 27 | Switch Lever | 按鈕 | 2 |
| 28 | Pin | 按鈕固定銷 | 2 |
| 29 | Air Inlet Switch | 進氣開關 | 2 |
| 30 | O-Ring | O 型環 | 4 |
| 31 | Air Valve Pin | 開關軸 | 2 |
| 32 | O-Ring | O 型環 | 2 |
| 33 | Silencer Case | 消音管 | 1 |
| 34 | Air Reg | 微調進氣頭 | 1 |
| 35 | Air Plug | 快速接頭 | 1 |
| 36 | | | |
| 37 | | | |
| 38 | | | |